

# DESTROYIT® 2503

Compact, entry model Centralized Office shredder with a 10 1/4 inch feed opening and 20 gallon shred volume.

**Security level P-2** 4 mm strip-cut (3/16 inch)

Sheet capacity: 19-21\*

**Security level P-4** 4 x 40 mm cross-cut (3/16 x 1 1/2 inches)

Sheet capacity: 12-14\*

**Security level P-5** 2 x 15 mm cross-cut (3/32 x 5/8 inches)

Sheet capacity: 8-10\*

\*Certified using 8 1/2" x 11" 20 lb. bond and recommended power supply.



max.  
**21**  
sheets

← 10 1/4" →

Comprehensive SPS safety package: Easy Switch control element uses illuminated color codes and symbols to indicate operational status and functions as an emergency stop switch; patented, electronically controlled, transparent safety shield in the feed opening; automatic power cut-off when cabinet is opened or shred bin is full; automatic reverse and power cut-off when overfed; double protection against overheating; Zero Energy Consumption sleep mode cuts off power supply after 30 minutes of inactivity.

Automatic start and stop controlled by photo cell. High quality, hardened steel cutting shafts take staples, paper clips, and credit cards (strip-cut model takes CDs / DVDs). Lifetime warranty on the cutting shafts. Quiet and powerful single phase motor. Fully enclosed gear box housing. High quality wooden cabinet mounted on casters. Convenient, environmentally friendly shred bin does not require disposable shred bags.

## Specifications

<b>Shred volume, gallons</b>	20
<b>Feed opening, inches</b>	10 1/4
<b>Electrical requirements, volts</b>	115
<b>Maximum horsepower</b>	3/4
<b>Dimensions (D x W x H), inches</b>	14 3/4 x 19 3/4 x 34 1/4
<b>Shipping weight, pounds</b>	78

# DESTROYIT® 2503

## Features



### SOLID STEEL CUTTING SHAFTS

High grade, hardened steel cutting shafts are milled in our Balingen factory and warranted for life.



### EASY SWITCH

Multifunction control element uses optical signals to indicate operational status and functions as an emergency stop switch.



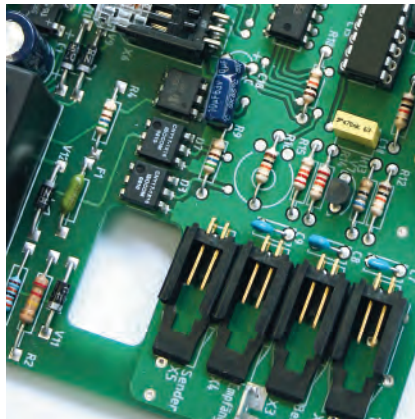
### PATENTED SAFETY SHIELD

Electronically controlled, transparent safety shield keeps fingers out of the feed opening.



### ENVIRONMENTALLY FRIENDLY BIN

Durable, lightweight shred bins can be used with or without disposable bags.



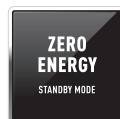
### LEAD-FREE SOLDERING

Only environmentally friendly, lead-free soldering is used in the production of our electrical components.



### QUALITY COMPONENTS

Cabinet doors are equipped with high quality adjustable metal hinges.



Southwest Binding & Laminating | P.O. Box 150 Maryland Heights, MO 63043-9150 | (314) 739-4400  
 Nationwide Toll Free Line (800) 325-3628 | Toll Free Fax (800) 942-2010 | [www.swbindinglaminating.com](http://www.swbindinglaminating.com)

